

RS 63, RS 63D, RS 63R



The RS 63, RS 63D, RS 63R contactor starters are made in a flameproof housing. RS 63, RS 63R are single output devices and allow for controlling and powering one 45kW (500V) maximum power engine. RS 63R also allows reverse operation of the engine. RS 63D is a double output device and allows for controlling and powering one 45kW (500V) maximum power engine or two 22 kW (500V) maximum power engines.

The apparatuses are equipped with safety devices protecting against: short-circuits, load asymmetry, overload, main channel low insulation resistance, short circuits, high resistance and control circuit interruptions, high earthing resistance, incorrect supply voltage phase sequence (option).

TECHNICAL DATA

Model	RS 63, RS 63R	RS 63D
Nominal voltage	400 V, 500 V, 690 V 50 Hz	
Nominal DC	70 A	70 A or 2x35 A
Total input current	125 A (loop-through 62 A)	
AC3 category connection capacity Ue=500V	45 kW	45 kW or 2x22 kW
Outside auxiliary voltages with leak control	24 V, 42 V 50 Hz	
Main channel BZU adjustment resistance	50 kΩ	
Dimensions with inlets (width x height x depth)	805x680x450 mm	
Weight	140 kg	
Housing electrical safety class	IP 54	
Marking of the appliance	CE 1453 I M2 Ex d [ia] I	
Certificate number	KDB 06ATEX268X	

MODEL TYPES RS 63, RS 63R

Characteristics	Version						
	01	02	03	04	05	06	
Output current I _o	≤ 70A	≤ 27A	≤ 5A	≤ 70A	≤ 27A	≤ 5A	
Overload protection range	18÷90A	5,4÷27A	1÷5A	18÷90A	5,4÷27A	1÷5A	
Additional equipment	lack			load asymmetry and incorrect phase sequence safety			
Drawing No.	RS-63	AM-910088-01	AM-910088-02	AM-910088-03	AM-910088-04	AM-910088-05	AM-910088-06
	RS-63 R	AM-910089-01	AM-910089-02	AM-910089-03	AM-910089-04	AM-910089-05	AM-910089-06

MODEL TYPES RS 63 D

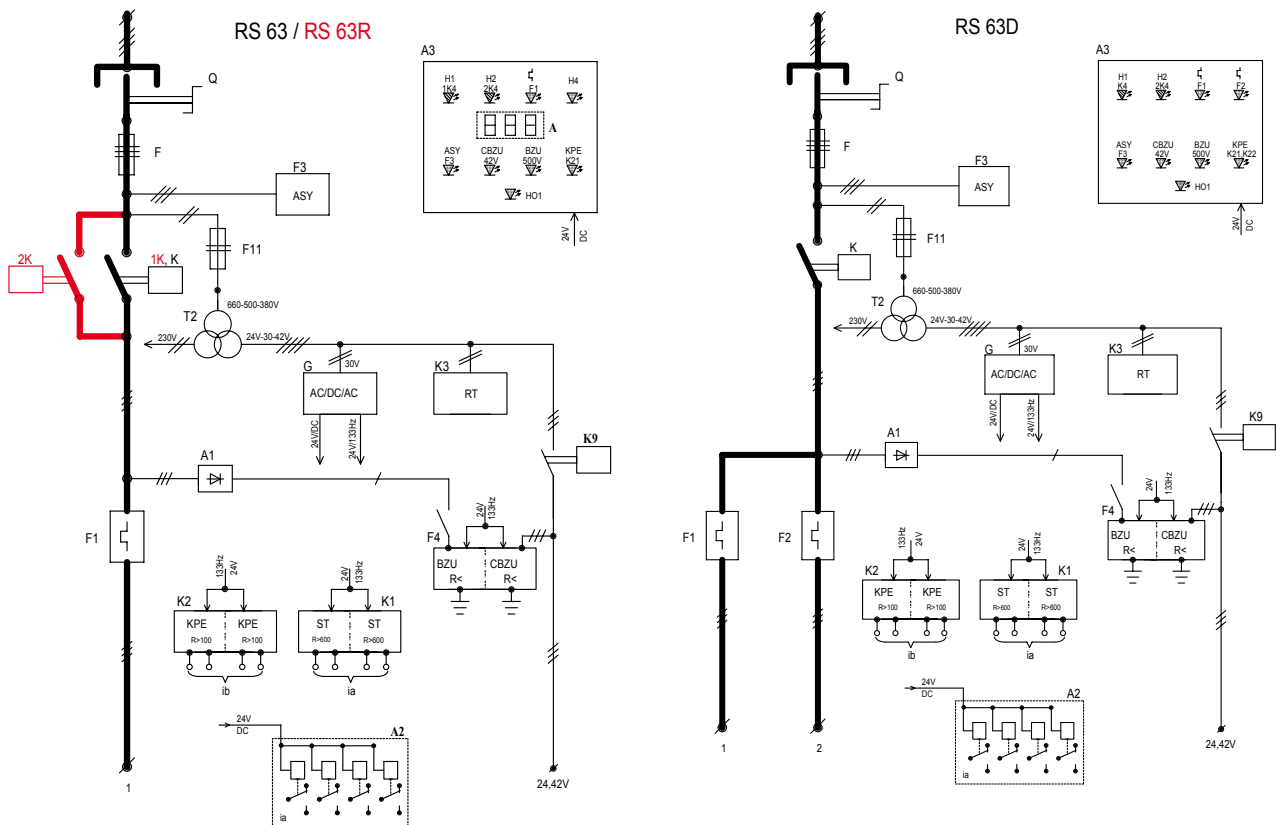
Characteristics	Version									
	01	06	02	07	03	08	04	09	05	10
Total output current I _o	≤ 70A		≤ 70A		≤ 54A		≤ 32A		≤ 10A	
Overload protection range	Output I	18÷90A		18÷90A		5,4÷27A		5,4÷27A		1÷5A
	Output II	18÷90A		1÷5A		5,4÷27A		1÷5A		1÷5A
Starter without additional equipment drawing No.	AM-910090-01		AM-910090-02		AM-910090-03		AM-910090-04		AM-910090-05	
Starter with load asymmetry and incorrect phase sequence safety drawing No.	AM-910090-06		AM-910090-07		AM-910090-08		AM-910090-09		AM-910090-10	

Per customer's order the starters can be equipped with overload protection range 0,2 ÷ 1 A.

EXAMPLE ORDER

RS 63R type contactor starter acc.to drawing no. AM-910089-02 – indicates an order for starters fitted with 5,4÷27 A overload protection.

STARTER'S SCHEMATIC DIAGRAM



2K contactor can be found in RS 63R

- F1 - overload module
- ASY - asymmetric module with phase sequence relay
- BZU - leakage blocking protection
- CBZU - central blocking leakage protection
- KPE - earthing continuity control
- RT - time relay module
- ST - control