

## ZT-\*45, ZTR-\*45



The transformer units type ZT-\*45 and ZTR-\*45 are manufactured in flameproof housings and equipped with the main transformer for 4.5kVA power rating. The units type ZT-\*45 are equipped with two independent contactor circuits (outputs) and make it possible to supply the installations (e.g. lighting ones) with three-phase voltage of 133V or 230V or control one or two lower power motors. The transformer units type ZTR-\*45 are designed for reversible control of a motor with maximum power of 3kW. Voltage change of the transformer unit secondary side is performed by a user during its installation. The relays used make it possible to control the unit by connecting the standard control circuit ( $R_{off} < 600 \Omega$ ) and „low ohm” circuit ( $R_{off} < 100 \Omega$ ).

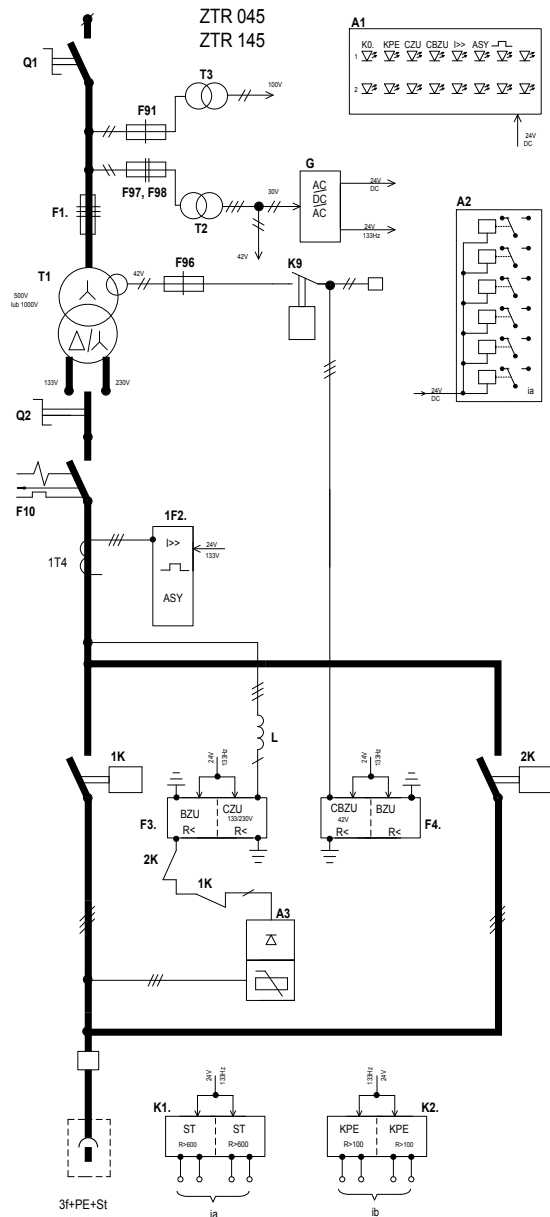
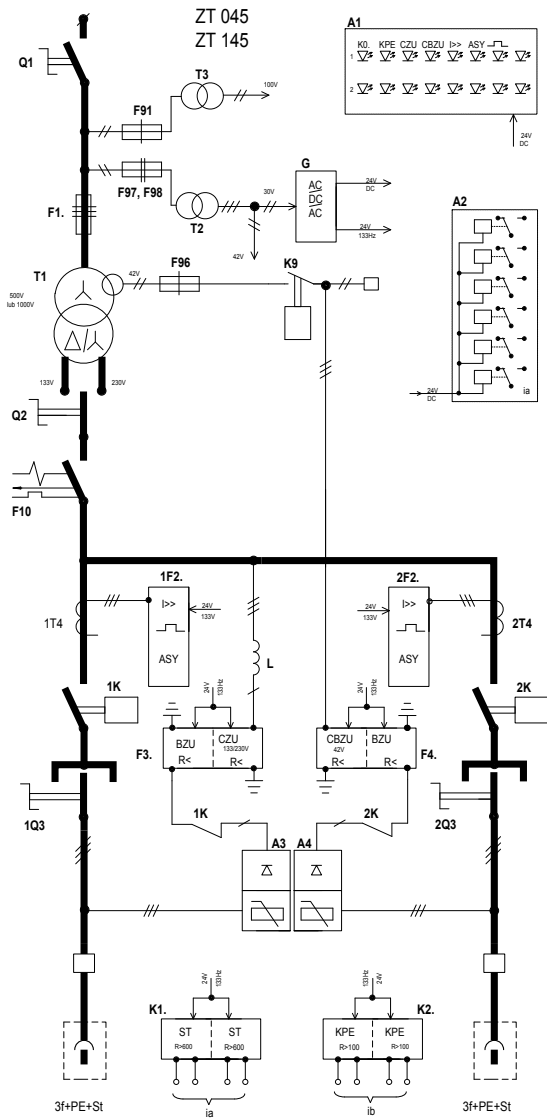
### TECHNICAL SPECIFICATIONS

		ZT-045	ZT-145	ZTR-045	ZTR-145
Rated primary voltage		500 V, 50 Hz	1000V, 50 Hz	500 V, 50 Hz	1000 V, 50 Hz
Three-phase transformer power		4,5 + 0,1 kVA Yy(d)			
Secondary voltage		133 V (d) or 230 V (y)			
Outside auxiliary voltages with leak control		42 V 50 Hz			
Maximum power of connected motors		1x3 kW or 2x1,5 kW	1x3 kW or 2x1,5 kW	1x3 kW	1x3 kW
Rated current of discharge 133/230 V		19,5/11,3 A		19,5/11,3 A	
Load capacity of through clamps		180 A			
Range of overload protection settings		1 ÷ 19,8 A			
Range of settings of short-circuit protection		3 ÷ 198 A			
Resistance of settings	Central leakage protection – 133 and 230 V	7k $\Omega$			
	Interlocking protection of 133 and 230 V	15k $\Omega$			
	Central interlocking 42V circuit protection	7k $\Omega$			
Dimensions with inlets (width x height x depth)		1070 x 785 x 540 mm			
Weight		240 kg			
Drawing No.		AM-9100047-03	AM-910047-06	AM-910066-03	AM-910066-06
Marking of the appliance		CE 1453 I M2(M1) Ex d [ia] I			
Certificate number		KDB 05ATEX284X			

### EXAMPLE ORDER

Transformer unit, type ZT-045 according to the drawing AM-910047-03 – means ordering a transformer unit provided for work at the voltage of 500 V.

DIAGRAMS OF TRANSFORMER UNITS' MAIN CIRCUITS



- I>> - short circuit element
- I<< - overload element
- ASY - asymmetry element
- BZU - interlocking leakage protection
- CBZU - central leakage protection
- CBZU - central blocking leakage protection
- KPE - earthing continuity control
- ST - control