



**EMERSON**<sup>™</sup>  
Industrial Automation

## Affinity

Dedicated HVAC/R Drive  
for Building Automation  
and Refrigeration

1.1kW to 132kW (1.5hp to 200hp)  
200V / 400V / 575V / 690V

IP20 (NEMA 1) and IP54 (NEMA 12)



**CONTROL  
TECHNIQUES**

[www.controltechniques.com](http://www.controltechniques.com)

## Affinity – A dedicated HVAC/R drive

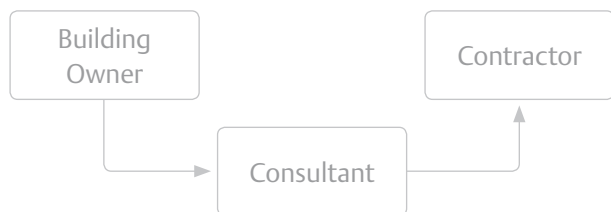
Affinity is Control Techniques' dedicated HVAC/R drive, designed specifically to meet the needs of consultants, contractors and owners of commercial buildings. A comprehensive product line incorporates special drive functionality and accessories to simply and efficiently solve your HVAC/R applications.

### Drive for a sustainable future

Affinity addresses the challenges for both today and the coming years. It is created with more than 30 years of drives experience and based on new research that considered the current and future issues and trends in the HVAC/R industry. Affinity incorporates the features you need to be at the forefront of building technology in relation to sustainability, reliability, communications and performance.

### Deliver on time and within budget every time

Our global support network provides you with assistance through each project phase. We understand the processes and challenges you face in specifying, purchasing and delivering HVAC/R projects, and will provide you with the information, support and services that ensure you can deliver fully optimised solutions on time and within budget.



*It is good to know that wherever the project is, we will be supported by knowledgeable people who understand our needs and our technology*



IP54  
(NEMA 12)  
Affinity

### Helping you to save energy, day after day

Affinity allows you to minimise wasted energy throughout your buildings by optimising the pump or fan speed to match the environmental conditions within the building. This helps to reduce your energy costs and your carbon footprint. Software tools help to analyse the potential energy savings and can provide the justification to make the capital investment with a known payback period.

*We need to reduce costs and our carbon footprint*





### Affinity features

Size 1 IP20 (NEMA 1) drive

Size 1 IP54 (NEMA 12) drive



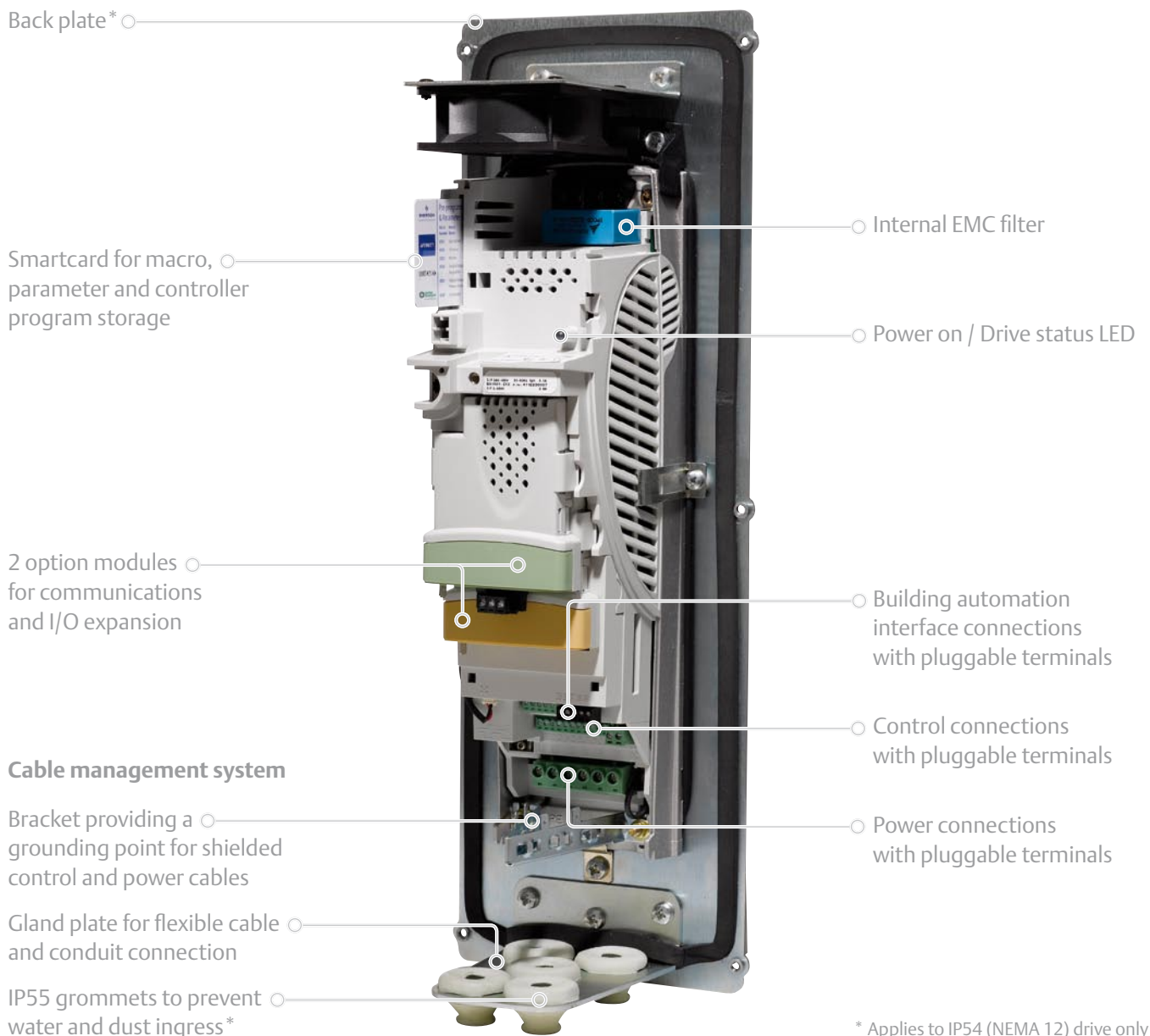
Integral keypad - multilanguage LCD keypad with plain text

Standard terminal cover

Top sealing cover






## Size 1 IP54 (NEMA 12) drive with cover removed



\* Applies to IP54 (NEMA 12) drive only

## A complete HVAC/R solution

Affinity includes all of the features you would expect from a dedicated HVAC/R drive, plus more:

- Fire Mode for building occupant safety
- Two independent PID controllers can, for example, control dampers or valve actuators to eliminate external equipment
- Free software tools for
  - Energy saving calculations
  - Carbon dioxide saving calculations
  - Harmonic analysis
  - Commissioning and monitoring
- Onboard controller with real-time clock, ideal for reducing costs and improving performance in standalone applications and OEM solutions
- Sleep / wake mode automatically switches off a fan or pump when demand drops below a threshold for a certain time
- Motor pre-heat to prevent condensation
- Low load detection to sense mechanical problems such as a broken drive belt
- All Affinity models have integrated reactors to control supply harmonics. This saves space and cabling costs
- High switching frequency up to 16kHz for quiet motor operation
- Smartcard data storage
  - Specific macros for simplifying set up of common HVAC/R applications
  - Easy back up and copying of drive configuration
- Integrated network connectivity
  - BACnet 
  - Metasys N2
  - Modbus RTU
- Optional connectivity, through click-in option modules
  - LonWorks 
  - Ethernet 
  - Additional I/O
- Pluggable terminals for simple installation and maintenance

## Intelligent Thermal Management

Affinity uses an Intelligent Thermal Management system (ITM) to monitor the temperature of its internal components. In high ambient temperatures the drive automatically adjusts the output to maintain system operation whilst ensuring drive reliability.

*I want to know that when the system is required to operate beyond the design limits, the drive will continue to perform*



IP20 (NEMA 1)  
size 1 Affinity

## Specifying HVAC/R drives

### Specify, fit and forget

Affinity is available in 6 frame sizes with both IP20 (NEMA 1) and IP54 (NEMA 12) models. It operates with standard global power supplies from 200V through to 690V. The base technology for Affinity is already proven in commercial and industrial applications around the world.

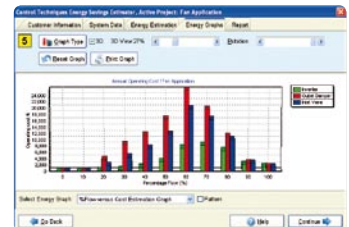


*At the end of one project, I need to be able to move on to the next. I cannot afford to spend time supporting projects that we have already been paid for*

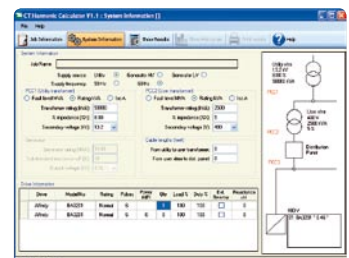
We will help you to specify the drives, put forward the commercial arguments and ensure the drive system complies with regulations for energy efficiency, harmonics and EMC.

- The standard documentation and our online resources provide the information you need to specify Affinity drives in most HVAC/R applications

- **CT Energy Savings Estimator**  
Energy optimising software helps you to calculate the commercial arguments for pay-back periods and make carbon dioxide savings



- **CT Harmonic Calculator**  
Supply harmonics calculator will help you to economically meet the required standards for your installation



- For any questions, our drive experts are on hand to provide you with their experience and knowledge

*Getting access to key people and information on time can be critical to the success of a project*



## Integration with your Building Management System

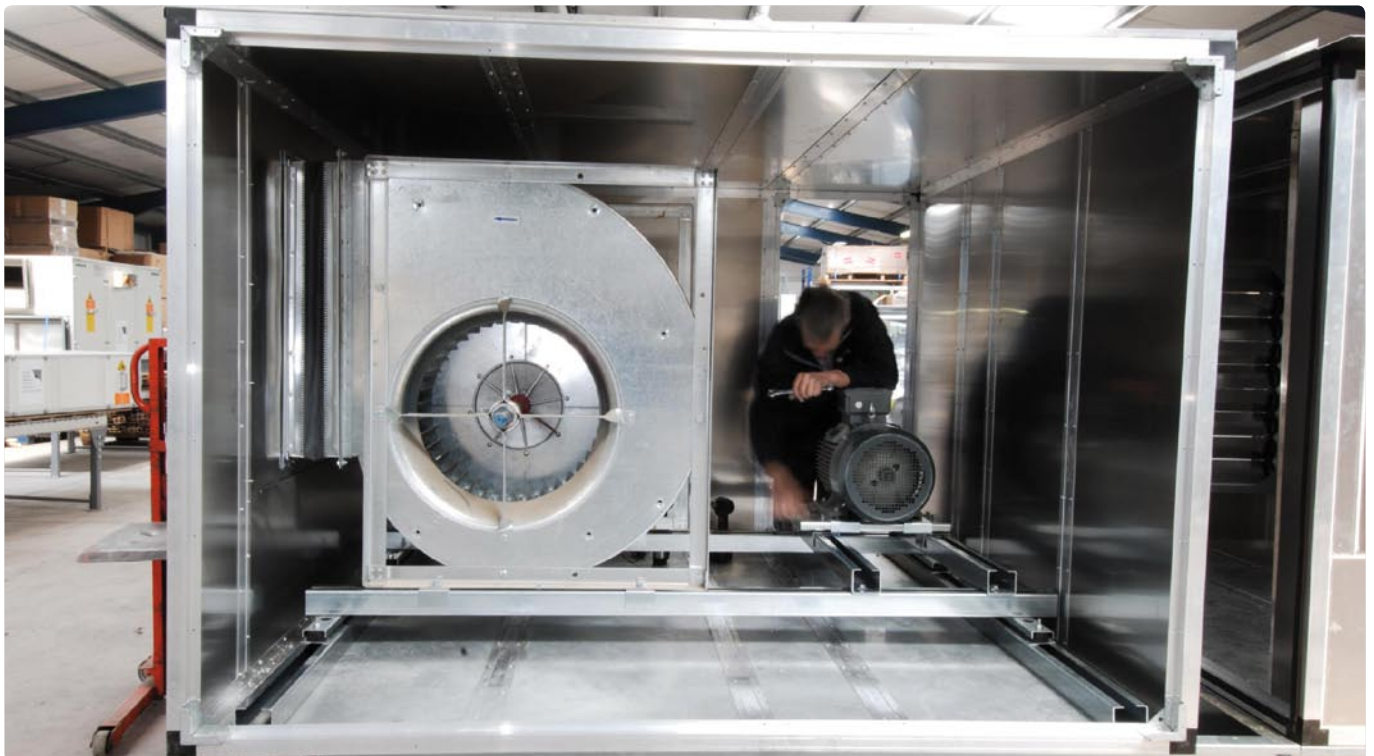
Affinity has all the communications capability you need. Protocols integrated as standard include, BACnet, Metasys N2, and Modbus RTU. Click-in option modules allow specialised communication such as LonWorks and Ethernet to be used.

*If the drives cannot integrate with our Building Management System, then we really have no use for them*

## Flexibility without a Building Management System

For system redundancy or for smaller applications without a Building Management System, Affinity offers the possibility of using the onboard Logic and PID controllers, real time clock and flexible I/O. The system is easy to configure, is able to cope with any Building Automation problem and requires no additional space or external components.

*It would be great to have some level of redundancy so that if the Building Management System failed the key equipment continued to operate autonomously*



## Installing and commissioning HVAC/R systems

Affinity is quick and easy to set-up. The drive's HVAC/R features may be configured using a multilingual keypad, Smartcard, or the supplied commissioning software that guides the user through the configuration process.

*At the end of a big project the pressure is on and our window for installation and commissioning often gets squeezed. We need to be able to get in there, get it working and get out*

### Simple and intuitive

The Affinity keypad is a simple, intuitive plain language interface for configuring and maintaining the drive. There are no confusing switches or soft keys, only the functions needed to get the job done simply and quickly, with a help button in case more information is required.

*I just want a simple interface that helps me to get the drive running, and allows me to monitor its performance*



### Smart start-up

To further assist in maintenance and commissioning, every drive is supplied with a Smartcard; this is a credit card sized data storage device that can quickly download

pre-programmed application macros (parameter sets) to the drive or backup and copy settings from one drive to another. Simply insert the Smartcard into the drive and using the keypad, select the appropriate macro for your application. A Macro Guide is included with the drive.



### Flexibility to change specification

Affinity HVAC/R macros and option modules allow you to adapt key drive functionality at any time to meet changing project needs. Option modules for connectivity and I/O are simply clicked into position under the drive cover, requiring no additional space.

*Occasionally we need to change the way something works during or after the installation, it would be so much better if this could be done without having to remove the equipment*

### Easy performance tuning

Autotune features help you to get the best performance by measuring the motor and machine attributes and automatically optimising control parameters to maximise energy efficiency.

*There are some applications you see over and over again, the features to solve these need to be standard in a dedicated HVAC/R drive*



IP20 (NEMA 1) Affinity range

### Compact size

Affinity has been designed using advanced thermal modelling techniques to ensure that performance is achieved with the most compact dimensions. Larger drives are built on a rigid SMC chassis, which further reduces the dimensions and weight making them exceptionally easy to handle and install.

*Size is important. Space taken up by control equipment is space that cannot be utilised or rented*

### Training

Our training centres located around the world are focused on providing training and resources to ensure you and your team can deal with every drive application.

*We need to be able to get the drives running quickly, every time. Training is critical*

## Living with HVAC/R systems

Once installed, Affinity drives require minimal maintenance. You can expect the drive to give years of reliable service, ensuring the comfort and well being of the building occupants. However, should anything go wrong, our engineers are on hand to provide advice, support and services.

*Once the contractor has left, we need to be able to live with the equipment*

### Remote connectivity

A click-in Ethernet communications option module allows the drive to be accessed from anywhere around the building or even around the world. This can be useful if you outsource your building maintenance or the drives are located in an inaccessible part of the building.

*It is great that we can allow an outside expert to access the drive remotely when we have a problem*



### Much less noise

Affinity uses a unique control strategy called Rotor Flux Control (RFC) to generate the power output waveforms. Unlike some other methods of control, this allows the quality of the output waveform to be selected by adjusting the switching frequency. There is a direct correlation between output quality and audible noise, where higher frequencies produce less audible noise and heating within the motor. This allows more flexibility for positioning HVAC/R equipment close to noise sensitive areas.

*The HVAC/R system should be unobtrusive to everyone that occupies the building*

## Support when I need it

We are committed to serving you. This is achieved through a global team of automation experts within our Drive Centres and distributors, who understand your operational needs. We have a passion for delivering solutions and service for drives and drive systems.

*Working with Control Techniques gives us piece of mind, knowing that we can always speak with a drive expert, any time of day*

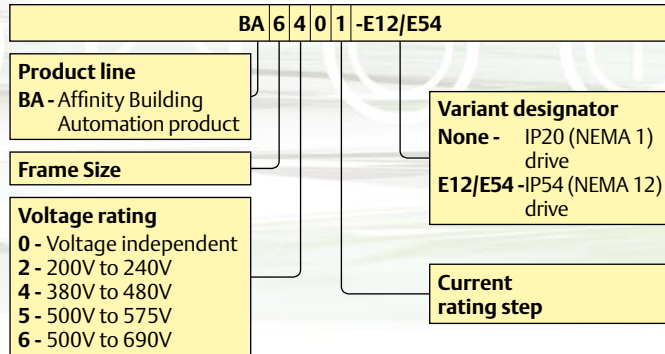


## Environmental safety and electrical conformance

- IP54 (NEMA 12) and UL Type 12 module, or
- IP20 (NEMA 1) module and, with optional conduit box fitted, UL Type 1 module
  - IP20 (NEMA 1) module meets IP54 when through panel mounted
- Humidity 95% maximum (non condensing) at 40°C
- Altitude: 0 to 3000m, derate 1% per 100m between 1000m and 3000m
- Vibration: Tested in accordance with IEC 60068-2-64
- Mechanical Shock Tested in accordance with IEC 60068-2-29
- Storage temperature -40°C to 50°C
- Electromagnetic Immunity complies with EN 61800-3 and EN 61000-6-2
- With on board EMC filter, complies with EN 61800-3 (2nd environment)
- EN 61000-6-3 and EN 61000-6-4 with optional footprint EMC filter
- IEC 61000-3-4 Supply conditions
- IEC 60146-1-1 Supply conditions
- IEC 61800-5-1 (Power Drive Systems)
- IEC 61131-2 I/O
- EN 60529 Ingress protection
- EN 50178 / IEC 62103 Electrical safety
- UL508C, UL840
- EN 61000-6-2, EN 61000-6-4 EMC

# Affinity model codes and ratings for IP20 (NEMA 1) and IP54 (NEMA 12) drives

## Model code explanation



## 500-575VAC +/- 10% (kW@575V) (hp@575V)

Frame	Size	Fan and Pump Duty		Compressor Duty	
		Max Cont Current	Typical Motor Output Power	Max Cont Current	Typical Motor Output Power
3	BA3501	5.4A	3kW / 3hp	4.1A	2.2kW / 2hp
	BA3502	6.1A	4kW / 5hp	5.4A	3kW / 3hp
	BA3503	8.4A	5.5kW / 7.5hp	6.1A	4kW / 5hp
	BA3504	11A	7.5kW / 10hp	9.5A	5.5kW / 7.5hp
	BA3505	16A	11kW / 15hp	12A	7.5kW / 10hp
	BA3506	22A	15kW / 20hp	18A	11kW / 15hp
	BA3507	27A	18.5kW / 25hp	22A	15kW / 20hp
4	BA4603*	36A	22kW / 30hp	27A	18.5kW / 25hp
	BA4604*	43A	30kW / 40hp	36A	22kW / 30hp
	BA4605*	52A	37kW / 50hp	43A	30kW / 40hp
	BA4606*	62A	45kW / 60hp	52A	37kW / 50hp
5	BA5601*	84A	55kW / 75hp	63A	45kW / 60hp
	BA5602*	99A	75kW / 100hp	85A	55kW / 75hp
6	BA6601*	125A	90kW / 125hp	100A	75kW / 100hp
	BA6602*	144A	110kW / 150hp	125A	90kW / 125hp

## 200-240VAC +/- 10% (kW@220V) (hp@230V)

Frame	Size	Fan and Pump Duty		Compressor Duty	
		Max Cont Current	Typical Motor Output Power	Max Cont Current	Typical Motor Output Power
1	BA1201	5.2A	1.1kW / 1.5hp	4.3A	0.75kW / 1hp
	BA1202	6.8A	1.5kW / 2hp	5.8A	1.1kW / 1.5hp
	BA1203	9.6A	2.2kW / 3hp	7.5A	1.5kW / 2hp
	BA1204	11A	3kW / 3hp	10.6A	2.2kW / 3hp
2	BA2201	15.5A	4kW / 5hp	12.6A	3kW / 3hp
	BA2202	22A	5.5kW / 7.5hp	17A	4kW / 5hp
3	BA2203	28A	7.5kW / 10hp	25A	5.5kW / 7.5hp
	BA3201	42A	11kW / 15hp	31A	7.5kW / 10hp
4	BA3202	54A	15kW / 20hp	42A	11kW / 15hp
	BA4201	68A	18.5kW / 25hp	56A	15kW / 20hp
5	BA4202	80A	22kW / 30hp	68A	18.5kW / 25hp
	BA4203	104A	30kW / 40hp	80A	22kW / 30hp
6	BA5201	130A	37kW / 50hp	105A	30kW / 40hp
	BA5202	154A	45kW / 60hp	130A	37kW / 50hp

\*The same model can be used on a 575V or a 690V supply, and has two different output ratings. For example: BA4603 is suitable for a 22kW output motor on a 575V supply and a 30kW output motor on a 690V supply. Can be used on IT supplies - all voltages, Grounded delta supplies - all voltages except 690V.

## 500-690VAC +/- 10% (kW@690V) (hp@690V)

Frame	Size	Fan and Pump Duty		Compressor Duty	
		Max Cont Current	Typical Motor Output Power	Max Cont Current	Typical Motor Output Power
4	BA4601	22A	18.5kW / 25hp	19A	15kW / 20hp
	BA4602	27A	22kW / 30hp	22A	18.5kW / 25hp
	BA4603	36A	30kW / 40hp	27A	22kW / 30hp
	BA4604	43A	37kW / 50hp	36A	30kW / 40hp
	BA4605	52A	45kW / 60hp	43A	37kW / 50hp
	BA4606	62A	55kW / 75hp	52A	45kW / 60hp
5	BA5601	84A	75kW / 100hp	63A	55kW / 75hp
	BA5602	99A	90kW / 125hp	85A	75kW / 100hp
6	BA6601	125A	110kW / 150hp	100A	90kW / 125hp
	BA6602	144A	132kW / 175hp	125A	110kW / 150hp

## 380-480VAC +/- 10% (kW@400V) (hp@460V)

Frame	Size	Fan and Pump Duty		Compressor Duty	
		Max Cont Current	Typical Motor Output Power	Max Cont Current	Typical Motor Output Power
1	BA1401	2.8A	1.1kW / 1.5hp	2.1A	0.75kW / 1hp
	BA1402	3.8A	1.5kW / 2hp	3A	1.1kW / 1.5hp
	BA1403	5A	2.2kW / 3hp	4.2A	1.5kW / 3hp
	BA1404	6.9A	3kW / 5hp	5.8A	2.2kW / 3hp
	BA1405	8.8A	4kW / 5hp	7.6A	3kW / 5hp
	BA1406	11A	5.5kW / 7.5hp	9.5A	4kW / 5hp
2	BA2401	15.3A	7.5kW / 10hp	13A	5.5kW / 7.5hp
	BA2402	21A	11kW / 15hp	16.5A	7.5kW / 10hp
	BA2403	29A	15kW / 20hp	25A	11kW / 20hp
3	BA3401	35A	18.5kW / 25hp	32A	15kW / 25hp
	BA3402	43A	22kW / 30hp	40A	18.5kW / 30hp
4	BA3403	56A	30kW / 40hp	46A	22kW / 40hp
	BA4401	68A	37kW / 50hp	60A	30kW / 50hp
	BA4402	83A	45kW / 60hp	74A	37kW / 60hp
5	BA4403	104A	55kW / 75hp	96A	45kW / 75hp
	BA5401	138A	75kW / 100hp	124A	55kW / 100hp
6	BA5402	168A	90kW / 125hp	156A	75kW / 125hp
	BA6401	205A	110kW / 150hp	180A	90kW / 150hp
	BA6402	236A	132kW / 200hp	210A	110kW / 150hp

### Notes:

For size 1 to 6 IP20 (NEMA 1) drives and size 1 to 3 IP54 (NEMA 12) drives, the continuous current ratings given are for maximum 40°C (104°F) [/50°C (122°F) with derating], 1000m altitude and 3.0kHz switching. For size 4 to 6 IP54 (NEMA 12) drives, the continuous current ratings given are for maximum 35°C (95°F) [/40°C (104°F) with derating], 1000m altitude and 3.0kHz switching.

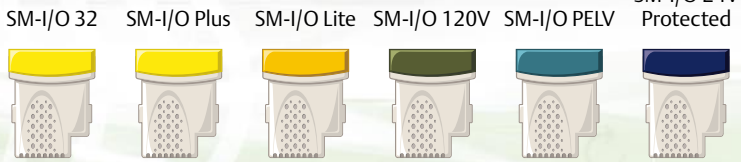
Select model on actual motor full load current.

All drives include keypad and internal EMC filters.

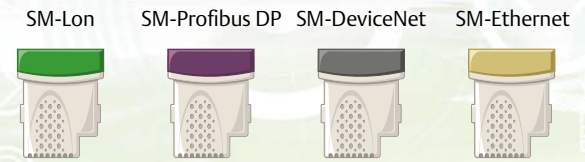
## Options, weights and dimensions

### Options

#### Input/Output click-in option modules



#### Communications click-in option modules



#### Additional EMC filters to EN61000-6-4

Affinity's built-in EMC filter complies with EN 61800-3. External EMC filters are available for compliance with EN 61000-6-4.

IP20 (NEMA 1) Drive	Filter order code	IP20 (NEMA 1) Drive	Filter order code	IP54 (NEMA 12) Drive	Filter order code	IP54 (NEMA 12) Drive	Filter order code
BA1201 to BA1202	4200-6118	BA3401 to BA3403	4200-6305	BA1201-E12/54 to BA1202-E12/54	4200-6125	BA3401-E12/54 to BA3403-E12/54	4200-6318
BA1203 to BA1204	4200-6119	BA4401 to BA4403	4200-6406	BA1203-E12/54 to BA1204-E12/54	4200-6124	BA4401-E12/54 to BA4403-E12/54	4200-6414
BA2201 to BA2203	4200-6210	BA5401 to BA5402	4200-6503	BA2201-E12/54 to BA2203-E12/54	4200-6218	BA5401-E12/54 to BA5402-E12/54	4200-6505
BA3201 to BA3202	4200-6307	BA6401 to BA6402	4200-6603	BA3201-E12/54 to BA3202-E12/54	4200-6320	BA6401-E12/54 to BA6402-E12/54	4200-6605
BA4201 to BA4203	4200-6406	BA3501 to BA3507	4200-6309	BA4201-E12/54 to BA4203-E12/54	4200-6414	BA3501-E12/54 to BA3507-E12/54	4200-6319
BA1401 to BA1404	4200-6118	BA4601 to BA4606	4200-6408	BA1401-E12/54 to BA1404-E12/54	4200-6125	BA4601-E12/54 to BA4606-E12/54	4200-6415
BA1405 to BA1406	4200-6119	BA5601 to BA5602	4200-6504	BA1405-E12/54 to BA1406-E12/54	4200-6124	BA5601-E12/54 to BA5602-E12/54	4200-6506
BA2401 to BA2403	4200-6210	BA6601 to BA6602	4200-6604	BA2401-E12/54 to BA2403-E12/54	4200-6218	BA6601-E12/54 to BA6602-E12/54	4200-6606

### Weights and dimensions



Frame Size	Model	Weight			
		IP20 (NEMA 1) drive		IP 54 (NEMA 12) drive	
		kg	lb	kg	lb
1	BA1201 to BA1204, BA1401 to BA1404	5	11	9	20
	BA1405 and BA1406	5.8	12.8		
2	All	7	15.4	12	26.5
3	All	15	33.1	25	55
4	All	30	66.1	40	88
5	All	55	121.3	70	154
6	All	75	165.3	90	198

Frame Size	Dimension					
	IP20 (NEMA 1) drive			IP54 (NEMA 12) drive		
	H	W	D	H	W	D
1	386mm (15.20in)	100mm (3.94in)	219mm (8.62in)	560mm (22.05in)	184mm (7.24in)	264mm (10.39in)
2	389mm (15.32in)	155mm (6.10in)		552mm (21.73in)	236mm (9.29in)	262mm (10.32in)
3	389mm (15.32in)	250mm (9.84in)	260mm (10.24in)	544mm (21.42in)	331mm (13.03in)	302mm (11.89in)
4	547mm (21.54in)	310mm (12.21in)	298mm (11.73in)	703mm (27.68in)	386mm (15.20in)	346mm (13.62in)
5	858mm (33.78in)			1211mm (47.68in)	416mm (16.38in)	347mm (13.66in)
6	1169mm (46.02in)			1522mm (59.92in)	416mm (16.38in)	348mm (13.70in)

# DRIVING THE WORLD...

## Control Techniques Drive & Application Centres

**AUSTRALIA**  
Melbourne Application Centre  
T: +613 973 81777  
controltechniques.au@emerson.com

Sydney Drive Centre  
T: +61 2 9838 7222  
controltechniques.au@emerson.com

**AUSTRIA**  
Linz Drive Centre  
T: +43 7229 789480  
controltechniques.at@emerson.com

**BELGIUM**  
Brussels Drive Centre  
T: +32 1574 0700  
controltechniques.be@emerson.com

**BRAZIL**  
Emerson do Brazil Ltda  
T: +5511 3618 6569  
controltechniques.br@emerson.com

**CANADA**  
Toronto Drive Centre  
T: +1 905 201 4699  
controltechniques.ca@emerson.com

Calgary Drive Centre  
T: +1 403 253 8738  
controltechniques.ca@emerson.com

**CHINA**  
Shanghai Drive Centre  
T: +86 21 5426 0668  
controltechniques.ch@emerson.com

Beijing Application Centre  
T: +86 10 856 31122 ext 820  
controltechniques.ch@emerson.com

**CZECH REPUBLIC**  
Brno Drive Centre  
T: +420 541 192111  
controltechniques.cz@emerson.com

**DENMARK**  
Copenhagen Drive Centre  
T: +45 4369 6100  
controltechniques.dk@emerson.com

**FRANCE\***  
Angoulême Drive Centre  
T: +33 5 4564 5454  
controltechniques.fr@emerson.com

**GERMANY**  
Bonn Drive Centre  
T: +49 2242 8770  
controltechniques.de@emerson.com

Chemnitz Drive Centre  
T: +49 3722 52030  
controltechniques.de@emerson.com

Darmstadt Drive Centre  
T: +49 6251 17700  
controltechniques.de@emerson.com

**GREECE\***  
Athens Application Centre  
T: +0030 210 57 86086/088  
controltechniques.gr@emerson.com

**HOLLAND**  
Rotterdam Drive Centre  
T: +31 184 420555  
controltechniques.nl@emerson.com

**HONG KONG**  
Hong Kong Application Centre  
T: +852 2979 5271  
controltechniques.hk@emerson.com

**INDIA**  
Chennai Drive Centre  
T: +91 44 2496 1123/  
2496 1130/2496 1083  
controltechniques.in@emerson.com

Pune Application Centre  
T: +91 20 2612 7956/2612 8415  
controltechniques.in@emerson.com

Kolkata Application Centre  
T: +91 33 2357 5302/2357 5306  
controltechniques.in@emerson.com

New Delhi Application Centre  
T: +91 11 2 576 4782/2 581 3166  
controltechniques.in@emerson.com

**IRELAND**  
Newbridge Drive Centre  
T: +353 45 448200  
controltechniques.ie@emerson.com

**ITALY**  
Milan Drive Centre  
T: +39 02575 751  
controltechniques.it@emerson.com

Reggio Emilia Application Centre  
T: +39 02575 751  
controltechniques.it@emerson.com

Vicenza Drive Centre  
T: +39 0444 933400  
controltechniques.it@emerson.com

**KOREA**  
Seoul Application Centre  
T: +82 2 3483 1605  
controltechniques.kr@emerson.com

**MALAYSIA**  
Kuala Lumpur Drive Centre  
T: +603 5634 9776  
controltechniques.my@emerson.com

**REPUBLIC OF SOUTH AFRICA**  
Johannesburg Drive Centre  
T: +27 11 462 1740  
controltechniques.za@emerson.com

Cape Town Application Centre  
T: +27 21 556 0245  
controltechniques.za@emerson.com

**RUSSIA**  
Moscow Application Centre  
T: +7 495 981 9811  
controltechniques.ru@emerson.com

**SINGAPORE**  
Singapore Drive Centre  
T: +65 6468 8979  
controltechniques.sg@emerson.com

**SLOVAKIA**  
EMERSON A.S  
T: +421 32 7700 369  
controltechniques.sk@emerson.com

**SPAIN**  
Barcelona Drive Centre  
T: +34 93 680 1661  
controltechniques.es@emerson.com

Bilbao Application Centre  
T: +34 94 620 3646  
controltechniques.es@emerson.com

Valencia Drive Centre  
T: +34 96 154 2900  
controltechniques.es@emerson.com

**SWEDEN\***  
Stockholm Application Centre  
T: +468 554 241 00  
controltechniques.se@emerson.com

**SWITZERLAND**  
Lausanne Application Centre  
T: +41 21 637 7070  
controltechniques.ch@emerson.com

Zurich Drive Centre  
T: +41 56 201 4242  
controltechniques.ch@emerson.com

**TAIWAN**  
Taipei Application Centre  
T: +886 22325 9555  
controltechniques.tw@emerson.com

**THAILAND**  
Bangkok Drive Centre  
T: +66 2962 2092 99  
controltechniques.th@emerson.com

**TURKEY**  
Istanbul Drive Centre  
T: +90 216 4182420  
controltechniques.tr@emerson.com

**UAE\***  
Emerson FZE  
T: +971 4 8118100  
ct.dubai@emerson.com

**UNITED KINGDOM**  
Telford Drive Centre  
T: +44 1952 213700  
controltechniques.uk@emerson.com

**USA**  
California Drive Centre  
T: +1 562 943 0300  
controltechniques.us@emerson.com

Charlotte Application Centre  
T: +1 704 393 3366  
controltechniques.us@emerson.com

Chicago Application Centre  
T: +1 630 752 9090  
controltechniques.us@emerson.com

Cleveland Drive Centre  
T: +1 440 717 0123  
controltechniques.us@emerson.com

Florida Drive Centre  
T: +1 239 693 7200  
controltechniques.us@emerson.com

Latin America Sales Office  
T: +1 305 818 8897  
controltechniques.us@emerson.com

Minneapolis US Headquarters  
T: +1 952 995 8000  
controltechniques.us@emerson.com

Oregon Drive Centre  
T: +1 503 266 2094  
controltechniques.us@emerson.com

Providence Drive Centre  
T: +1 401 541 7277  
controltechniques.us@emerson.com

Utah Drive Centre  
T: +1 801 566 5521  
controltechniques.us@emerson.com

## Control Techniques Distributors

**ARGENTINA**  
Euro Techniques SA  
T: +54 11 4331 7820  
eurotech@eurotechsa.com.ar

**BAHRAIN**  
Emerson FZE  
T: +971 4 8118100  
ct.bahrain@emerson.com

**BULGARIA**  
BLS - Automation Ltd  
T: +359 32 968 007  
info@blsaautomation.com

**CENTRAL AMERICA**  
Mercado Industrial Inc.  
T: +1 305 854 9515  
rsaybe@mercadoindustrialinc.com

**CHILE**  
Ingeniería Y Desarrollo  
Tecnológico S.A  
T: +56 2741 9624  
idt@idt.cl

**COLOMBIA**  
Sistronic LTDA  
T: +57 2 555 60 00  
sistronic@telesat.com.co

**CROATIA**  
Zigg-Pro d.o.o  
T: +385 1 3463 000  
zigg-pro@zg.htnet.hr

**CYPRUS**  
Acme Industrial Electronic  
Services Ltd  
T: +3572 5 332181  
acme@cytanet.com.cy

**EGYPT**  
Samiram  
T: +202 7360849/  
+202 7603877  
samiramz@samiram.com

**FINLAND**  
SKS Control  
T: +358 207 6461  
control@sksf.fi

**HUNGARY**  
Control-VH Kft  
T: +361 431 1160  
info@controlvh.hu

**ICELAND**  
Samey ehf  
T: +354 510 5200  
samey@samey.is

**INDONESIA**  
Pt Apikon Indonesia  
T: +65 6468 8979  
info.my@controltechniques.com

Pt Yua Esa Sempurna  
Sejahtera  
T: +65 6468 8979  
info.my@controltechniques.com

**ISRAEL**  
Dor Drives Systems Ltd  
T: +972 3900 7595  
info@dor1.co.il

**KENYA**  
Kassam & Bros Co. Ltd  
T: +254 2 556 418  
kassambros@africaonline.co.ke

**KUWAIT**  
Emerson FZE  
T: +971 4 8118100  
ct.kuwait@emerson.com

**LATVIA**  
EMT  
T: +371 760 2026  
janis@emt.lv

**LEBANON**  
Black Box Automation  
& Control  
T: +961 1 443773  
info@blackboxcontrol.com

**LITHUANIA**  
Elinta UAB  
T: +370 37 351 987  
sigitas@elinta.lt

**MALTA**  
Mekanika Limited  
T: +35621 442 039  
mfrancica@gasan.com

**MEXICO**  
MELCSA  
T: +52 55 5561 1312  
melcsamx@iserve.net.mx  
SERVITECK, S.A de C.V  
T: +52 55 5398 9591  
servitek@data.net.mx

**MOROCCO**  
Leroy Somer Maroc  
T: +212 22 354948  
lsmaroc@wanadoopro.ma

**NEW ZEALAND**  
Advanced Motor Control. Ph.  
T: +64 (0) 274 363 067  
info.au@controltechniques.com

**PHILIPPINES**  
Control Techniques  
Singapore Ltd  
T: +65 6468 8979  
info.my@controltechniques.com

**POLAND**  
APATOR CONTROL Sp. z o.o  
T: +48 56 6191 207  
drives@apator.torun.pl

**PORTUGAL**  
Harker Sumner S.A  
T: +351 22 947 8090  
drives.automation@harker.pt

**PUERTO RICO**  
Powermotion  
T: +1 787 843 3648  
dennis@powermotionpr.com

**QATAR**  
Emerson FZE  
T: +971 4 8118100  
ct.qatar@emerson.com

**SAUDI ARABIA**  
A. Abunayyan Electric Corp.  
T: +9661 477 9111  
aec-salesmarketing@  
abunayyanguroup.com

**SERBIA & MONTENEGRO**  
Master Inzenjering d.o.o  
T: +381 24 551 605  
master@eunet.yu

**SLOVENIA**  
PS Logatec  
T: +386 1 750 8510  
ps-log@ps-log.si

**TUNISIA**  
SIA Ben Djemaa & CIE  
T: +216 1 332 923  
bendjemaa@planet.tn

**URUGUAY**  
SECOIN S.A.  
T: +5982 2093815  
secoin@secoin.com.uy

**VENEZUELA**  
Digimex Sistemas C.A.  
T: +58 243 551 1634

**VIETNAM**  
N.Duc Thinh  
T: +84 8 9490633  
infotech@nducthinh.com.vn